

Contract Insight Enterprise Edition (client hosted)

Recommended Architecture for non-hosted clients

Option 1: Simple - for less than 1,000 contracts per year



Single Server Option

- Microsoft Windows 2000 Server, or 2003, or 2008 Server; virtualized servers supported
- Microsoft SQL Database Server 2000 ,or 2005 or 2008; .NET Framework
- 1 GHZ CPU or better ; 1 GB RAM or better
- 20-40 GB of free disk space after the OS and DB is installed
- Services: IIS, SMTP, SQL, Windows Tasks Scheduler

Option 2: Advanced Configuration - for 1,000 contracts per year



Server 1: Application Server

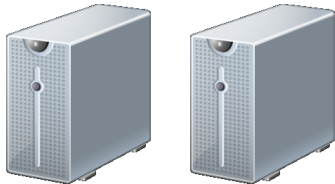
- Microsoft Windows 2000 Server, or 2003 Server, or 2008 Server; virtualized servers supported
- .NET Framework
- 1 GHZ CPU or better; 1 GB RAM or better
- 10 GB of free disk space after the OS and DB is installed
- Services: IIS, SMTP, Windows Tasks Scheduler



Server 2: Database Server

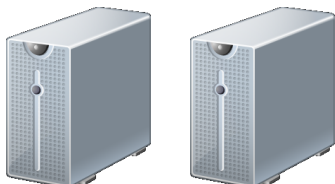
- Microsoft Windows 2000 Server, or 2003 Server, or 2008 Server
- MS SQL Database 2000 or 2005 or 2008
- 1 GHZ CPU or better; 1 GB RAM or better
- 20-40 GB of free disk space after the OS and DB is installed
- Services: SQL

Option 3: Advanced Cluster - for high availability systems



Application Cluster

- Microsoft Windows 2000 Server or 2003 Server or 2008 Server; virtualized servers supported
- .NET Framework
- 1 GHZ CPU or better; 1 GB RAM or better
- 10 GB of free disk space after the OS and DB is installed
- Services: IIS, SMTP, Windows Tasks Scheduler



SQL Database Cluster

- Microsoft Windows 2000 Server or 2003 Server, or 2008 Server; virtualized servers supported
- MS SQL Database 2000 or 2005 or 2008
- 1 GHZ CPU or better; 1 GB RAM or better
- 10 GB of free disk space after the OS and DB is installed
- Services: IIS, SMTP, Windows Tasks Scheduler